

M32JM-000105-100PG

✓ ACTIVE

MEAS | MEAS M3200

TE Internal #: 20006465-00

Industrial Pressure Transducer, Gauge, 24-bitADCI2C Output
Signal, 2X Rated Proof Pressure Range, MEAS M3200

[View on TE.com >](#)



Sensors > Pressure Sensors > Pressure Transducers > Compact Industrial Pressure Transducer



Pressure Sensor Type: Industrial Pressure Transducer

Pressure: 7 bar [100 psi]

Pressure Type: Gauge

Supply Voltage Range: 2.7 – 5 V

Output Signal Type: 24-bitADCI2C

[All Compact Industrial Pressure Transducer \(42\)](#)

Features

Product Type Features

Pressure Sensor Type	Industrial Pressure Transducer
Pressure Type	Gauge

Configuration Features

Electrical Connection	Cable 1 m
-----------------------	-----------

Electrical Characteristics

Supply Voltage Range	2.7 – 5 V
----------------------	-----------

Body Features

Port Material	17-4PH
---------------	--------

Dimensions

Product Height	56.64 mm[2.23 in]
Hex Width Across Flats	22.2 mm[.875 in]

Usage Conditions

Pressure	7 bar[100 psi]
Operating Temperature Range	-40 – 105 °C[-40 – 221 °F]

Operation/Application

Output Signal Type	24-bitADCI2C
--------------------	--------------



Proof Pressure Range	2X Rated
Pressure Accuracy	±0.25% FSO

Other

Sensor Options	Adhesive Label, No Snubber
Port Fitting	1/4-18 NPT

Product Compliance

For compliance documentation, visit the product page on TE.com>

EU RoHS Directive 2011/65/EU	Compliant with Exemptions
EU ELV Directive 2000/53/EC	Compliant with Exemptions
China RoHS 2 Directive MIIT Order No 32, 2016	Restricted Materials Above Threshold
EU REACH Regulation (EC) No. 1907/2006	Current ECHA Candidate List: JAN 2025 (247) Candidate List Declared Against: JAN 2025 (247) Does not contain REACH SVHC
Halogen Content	Not Yet Reviewed for halogen content
Solder Process Capability	Not reviewed for solder process capability

Product Compliance Disclaimer

This information is provided based on reasonable inquiry of our suppliers and represents our current actual knowledge based on the information they provided. This information is subject to change. The part numbers that TE has identified as EU RoHS compliant have a maximum concentration of 0.1% by weight in homogenous materials for lead, hexavalent chromium, mercury, PBB, PBDE, DBP, BBP, DEHP, DIBP, and 0.01% for cadmium, or qualify for an exemption to these limits as defined in the Annexes of Directive 2011/65/EU (RoHS2). Finished electrical and electronic equipment products will be CE marked as required by Directive 2011/65/EU. Components may not be CE marked. Additionally, the part numbers that TE has identified as EU ELV compliant have a maximum concentration of 0.1% by weight in homogenous materials for lead, hexavalent chromium, and mercury, and 0.01% for cadmium, or qualify for an exemption to these limits as defined in the Annexes of Directive 2000/53/EC (ELV). Regarding the REACH Regulation, the information TE provides on SVHC in articles for this part number is based on the latest European Chemicals Agency (ECHA) ‘Guidance on requirements for substances in articles’ posted at this URL: <https://echa.europa.eu/guidance-documents/guidance-on-reach>

Compatible Parts





Also in the Series | [MEAS M3200](#)



[Industrial Pressure Transducers\(42\)](#)

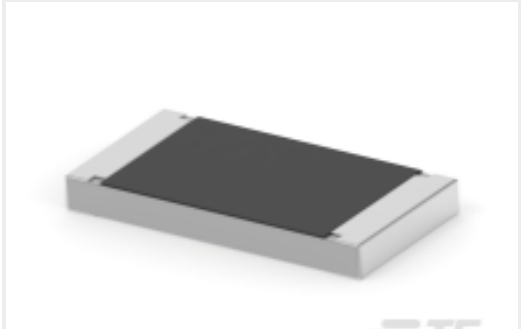


[Pressure Transducers\(42\)](#)

Customers Also Bought



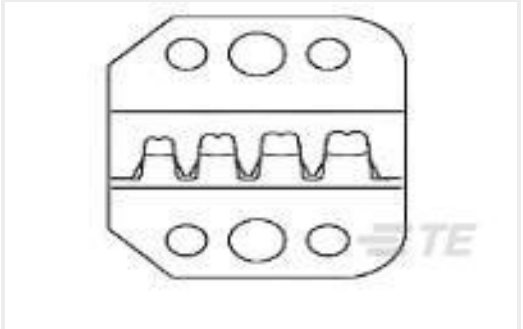
TE Part #1-2176345-6
[CRGCQ 1210 180R 1%](#)



TE Part #3-2176350-7
[CRGCQ 2512 1M0 5%](#)



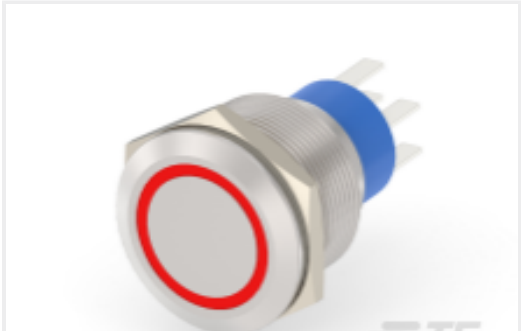
TE Part #2-2176329-9
[CRGP 1210 2K2 1%](#)



TE Part #58628-2
[PROCRMP DIESET 26-14 ULTRAFAST](#)



TE Part #3-1623774-2
[C14 3R3 5% \(LOOSE\)](#)



TE Part #4-2213772-7
[AV22 DPM 3A MOVE RING LED RED 24V](#)



TE Part #5-146261-5
[10 MODII HDR DRST B/A .100CL](#)



TE Part #DTM04-12PB-L012
[REC, 12P, BLK, N, FLANGE, B](#)



TE Part #CAT-P592-F266
[PIDG FASTON Receptacle Quick Disconnects](#)

Documents

[CAD Files](#)

[3D PDF](#)

[3D](#)

[Customer View Model](#)

[ENG_CVM_CVM_20006465-00_H.2d_dxf.zip](#)

[English](#)

[Customer View Model](#)



[ENG_CVM_CVM_20006465-00_H.3d_igs.zip](#)

English

Customer View Model

[ENG_CVM_CVM_20006465-00_H.3d_stp.zip](#)

English

By downloading the CAD file I accept and agree to the [Terms and Conditions](#) of use.

Datasheets & Catalog Pages

M3200 Pressure Transducer

English